

## Religious School 2012 Kickoff!



See page 4 for upcoming events and how you can help support our TBE Youth.

## SAVE THE DATE!

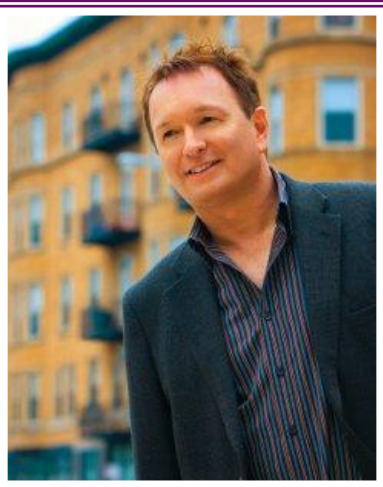
### Kevin Cole, America's Pianist: The Great Jewish American Songbook

Sunday, December 2, 2012

Kevin Cole will join us for a performance from his repertoire, which includes pieces by George Gershwin, Jerome Kern, Irving Berlin, and other great performers of the 20th century. He is an award-winning musical director, arranger, composer, vocalist, and archivist who garnered the praises of Irving Berlin, Stephen Sondheim, and members of the Jerome Kern and Gershwin families.

*Program funded through the generous support of  
The Brenda and Fred Friedman Foundation*

*If you are interested in providing additional support for this fundraising event as a Patron, please contact Cantor Gale.*



## Religious Service Schedule October 2012

<b>October 1</b>	Sukkot Candle lighting <i>Maftir: Eph Mazer</i>	9:30 am 6:15 pm
<b>October 2</b>	Sukkot <i>Maftir: Julian Brook</i>	9:30 am
<b>October 5</b>	Erev Shabbat Candle lighting	5:45 pm 6:08 pm
<b>October 6</b>	Saturday morning Parshat Hol Hamoed Sukkot <i>Maftir: Naomi Ivker</i> Shabbat Mincha	9:30 am 5:30 pm
<b>October 7</b>	Erev Shemini Atzeret Candle lighting  Erev Simchat Torah	9:30 am 6:05 pm 6:30 pm
<b>October 8</b>	Shemini Atzeret/Yizkor Candle lighting <i>Maftir: Morton Stern</i>	9:30 am 6:05 pm
<b>October 9</b>	Simchat Torah <i>Maftir: Dalia Abrams</i>	5:30 pm
<b>October 12</b>	Erev Shabbat Candle lighting	5:45 pm 5:59 pm
<b>October 13</b>	Saturday morning Parshat Bereshit <i>Bar Mitzvah: Josiah Sonich</i> Shabbat Mincha	9:30 am 5:30 pm
<b>October 19</b>	Erev Shabbat Candle lighting	5:45 pm 5:50 pm
<b>October 20</b>	Saturday morning Parshat Noach <i>Bar Mitzvah: Daniel Azrin</i> Shabbat Mincha	9:30 am 5:30 pm
<b>October 26</b>	Erev Shabbat Candle lighting	5:45 pm 5:43 pm
<b>October 27</b>	Saturday morning Parshat Lech-Lecha <i>Maftir: Gabe Ivker</i> Shabbat Mincha	9:30 am 5:30 pm

## Professional Staff & Board

Rabbi	Michelle Goldsmith rabbi@templebeth-el.net
Cantor	Daniel Gale cantorgale@templebeth-el.net
Executive Director	Bob Greenberg bgreenberg@templebeth-el.net
Executive Director TBE Foundation	Barbara Gordon barbaragordon@charter.net
Bookkeeper	Teresa Mason tmason@templebeth-el.net
Communications	Isa Dorsky idorsky@templebeth-el.net
Events	Debby Thomas dthomas@templebeth-el.net
Administration	Emily Gregory egregory@templebeth-el.net
Education & Youth Administrator	Maurine Halpern mhalpern@templebeth-el.net
Youth Group Coordinator	Jennifer Spiegelman jspiegelman@templebeth-el.net

### Officers

President	Arlene Fisher afisher185@aol.com
Vice President	Loraine Reznik lorainereznik@gmail.com
Vice President	Dan Weinrib weinribd@bellsouth.net
Secretary	Sue Lischkoff
Treasurer	Bruce Downs bruce@brucedownsepa.com

**Board of Directors:** Steve Altmann, Barbara Bonfield, Peggy Clarke, Todd Doobrow, Sallie Downs, Edwin Fineberg, Eric Goldis, Jessica Goldstein, Vikki Grodner, Allen Halpern, Jacob Halpern, Naomi Ivker, Martin Klinger, Billy Lapidus, Richard Lehr, Michelle Pake, Toby Siegel, Natalie Sikora, Richard Smith, Tim Thornton, Danielle Weintraub, Dorothy Ziff, Melvin Zivitz

**Past Presidents:** Karl Friedman, Joe Reznik, Howard Bearman, J.B. Mazer, Myron Radwin, Morton Stern, Julian Brook, Norman Berk, Maurice Shevin, Joan Lebow, Ron Froehlich, Ronald Shiland, Gary Gordon, Jack Schaeffer, Martin Damsky, Jimmy Krell, Steven Corenblum, Barbara Solomon, Seth Wolnek, Franklin Tessler, Vikki Grodner

**Sisterhood:**  
Steering Committee Chair, Janet Reagan  
jreagan@bham.rr.com

**Men's Club:**  
President, Jacob Halpern  
majorpromotions@charter.net

## Message From Our President



At the time of the reading of this article, our Rosh Hashanah and Yom Kippur services will have concluded, and the Ritual Committee, under Ed Fineberg's leadership, deserves a mighty Yasher Koach for the work they did assigning all the High Holiday honors! My hope is that the services were a source of spiritual renewal for you.

The kickoff of our Religious School year began on Sunday, August 26—there was an Open House for families to come see the newly-decorated hallways and classrooms and to learn about the plans for the upcoming school year. Maurine Halpern, Education and Youth Administrator, conducted the meeting where she discussed the curriculum, planned field trips and introduced the teachers and the children who will be celebrating Bar and

Bat Mitzvahs over the next 10 months, and the members of the upcoming Confirmation Class. Maurine, along with the teachers, the Rabbi, and the Cantor all were clad in special t-shirts that said "I am leading the future"; the children were given t-shirts that said "I am the future"! It was a fun morning—there was a moon bounce, a dunk tank, face painting, and balloon shaving, plus a delicious cookout provided by the Men's Club! We now have between 60 and 70 students enrolled for the coming year—very exciting!

Bruce Downs, Treasurer, and Teresa Mason, Bookkeeper, have been diligently working to straighten out our financial records. There were no balance sheets, accounts receivables or accounts payables organized as such, so it has been a very prolonged process to forensically seek out the correct information and enter it all into the computer. Cemetery Maintenance requests have also been mailed out, and we are hoping for a positive response—that our Temple families will want to be a part of maintaining our cemetery. Barbara Bonfield and her committee have hired Specialty Landscaping to oversee the maintenance. It is a labor of love for Barbara, and I know that we want to support her efforts!

The Past Presidents convened a meeting on September 5th that I attended. The main topic was our professional needs going forward. We discussed our budget deficit as well as our line of credit and how to get our financial house in order. Discussions have already begun at both the Executive Committee and Board levels, and Ken Grodner, Strategic Planning Chair, will be organizing parlor meetings where you will be able to share your thoughts and ideas. While I do not know what the future looks like, I DO know there are tough decisions that will have to be made as we make plans for our future.



To encourage reading of our bulletin, I am initiating a contest: the first person to find this image somewhere in the bulletin and call the office during office hours will receive a free donation!

My hope is that we will all come together as we make plans for Temple Beth-El's future. I welcome your questions and suggestions!

Warmly,

Arlene Fisher

## Message From Our Religious School

### Religious School is in Full Swing!

Our school year is in full swing now and our off-campus activities have begun. Our Youth Groups are up and running and our kids are learning a lot and having a great time.

### How to Help the Religious School

A special thank you to all of our 2012-2013 Religious School sponsors and volunteers. Because of your support, our Religious School is literally transforming before our eyes and becoming the warm, inviting, educational place we all want it to be. So far, we are proud to report that in addition to the generous support from TBE Sisterhood and TBE Foundation, the Religious School has collected over \$3,000 in monetary donations. We have collected 5 used computers for our computer lab, t-shirts for our staff and students, bulletin board paper, hand sanitizer, tissues, and sunscreen. However, we are still in need of monetary donations to help off-set the cost of the programs planned for this year. We are also still in need of a few more computers (new or used) for our classrooms and a camera (new or used) to document our Religious School year.

If you would like to donate, please contact Maurine Halpern at mhalpern@templebeth-el.net or 369-4489. Our Religious School staff is educating the future leaders of TBE and we take this job very seriously.

We sincerely thank the following sponsors for their support:

TBE Sisterhood	TBE Foundation
TBE Men's Club	Julie & Randy Bernstein & Family
Red Wing Shoes	Lisa & Alan Engel
Gloria Weintraub	Major Promotions
Jamie & Greg Odrezin	Karen & Ruben Halpern
Damsky Paper	Sally Goldstein
Sue & Albert Tuck	K-Chem, Inc.
Arlene Fisher	Allen, Shea, & Ava Ross Halpern
Total Skin & Beauty	Red Clay Technology Group
Margy Rosenbaum	Naomi & S. Edwin Fineberg
Birmingham Vending	

### October Calendar of Events

Oct. 1 — Sukkot: Junior Congregation  
 Oct. 3 — Sukkot Family Dinner  
 Oct. 7 — Project Mishpacha (6th), No School for Pre K-10th  
 Oct. 8 — Simchat Torah Service & Dinner  
 Oct. 12-14 — ISJL Fellow Weekend  
 Oct. 21 — Zoo Trip (Community event)  
 Oct. 26 — Family Shabbat Ruach & Dinner

## Celebrating becoming a Bar Mitzvah

### Steven Josiah Sonich

Son of Glynnis Fisher Levitt  
and Steven L. Sonich



**October 13th**

**9:30 am**

*Kiddush Luncheon to follow*

## Celebrating becoming a Bar Mitzvah

### Daniel Nathan Azrin

Son of Cheryl and Richard Azrin



**October 20th**

**9:30 am**

*Kiddush Reception sponsored by the Azrin family*

## Weekday Service Schedule

Daily Morning Minyan	7:00 am
Sundays & Secular Holidays	8:00 am
Daily Afternoon Minyan	5:30 pm
Saturday Afternoon Minyan	5:30 pm



## Message From Our Foundation

### Your Foundation's Sponsorship of September's Programming and Operations

September is an especially busy month at Temple Beth-El. Congregants enjoy the excitement of Rosh Hashanah and all the programming and services that surround this important Holiday. There are also many activities associated with our Religious School's New Year. It takes months to plan and prepare for September's 2012 programming. Programs and activities do not take place without proper planning and funding. The Foundation has specific Funds that provide financial support for programming and activities during this busy month. Listed below are the individual funds that provide financial support for activities or a required Temple operation during September 2012.

<b>Foundation Fund</b>	<b>Activity and/or Operational Support</b>
Morris & Joe Sirote Enrichment	Selichot Program Speakers – Jeff Lunden & Martha Wexler
Canter & Helen Ostrovsky Music	High Holiday Choir
Ziff Torah Repair	Repair Torahs used during Holiday Services
Norris & Faye Friedman Cemetery Maintenance	Prepare Cemetery for Special September Cemetery Visits
Anita & Julian Lichter Fund	Supplement Baby Sitting during Holiday Services
Malvin Goldstein Fund	Break the Fast (Caters, wait staff and food)
Israel Dombrow Fund	Holiday Security
Ruth & Joseph Sikora Religious Ed.	Religious School Support (Teachers, Aides, Materials, Etc.)
Heidi & Martin Damsky Teacher Ed.	ISJL curriculum training for teachers
Kianoff & Katz Family Youth Fund	Youth Group Support
Goldie & Sidney Ziff Education Fund	Religious School Support (Teachers, Aides, Materials, Etc.)
Lipsitz Family Ed. Fund	Religious School Support (Teachers, Aides, Materials, Etc.)
Marie Majeau Dues Assistance Fund	Family dues assistance
Stanley & Maxine Lapidus Special Projects Fund	Support for the Sukkot celebration

The funds listed are but a few that supported the programming and activities specially dedicated to the month of September. There are many other undesignated funds that pay for the additional janitorial help, Temple beautification, additional computer maintenance, printing, and a myriad of other seen and unseen services offered at TBE. If you would like to sponsor a specific activity, initiate a fund, or leave a bequest please contact Barbara Gordon, Foundation Director, at 862-5641 or [barbaragordon@charter.net](mailto:barbaragordon@charter.net). She will help you provide the Temple financial support that will be meaningful to you.

### Recent Donations

Myron and Marian Radwin gave a donation to the Jill Radwin Confirmation Trip Fund to honor her Yahrzeit.

Margy Rosenbaum gave a donation to the Margy and Al Rosenbaum Fund.

Sheri Schwartz gave a donation to the Anita and Julian Lichter Fund in honor of her parents.

Paul Grodner gave a donation to the Paul and Charlotte Grodner Senior Adult Programming Fund.

The Lapidus Family gave a donation to the Maxine and Stanley Lapidus Fund in memory of their parents.

Wendy Pollets gave a donation to the Jill Radwin Confirmation Trip Fund.

Phyllis Allmont gave a donation to the Ziff Torah Repair Fund.

Jimmy and Sheri Krell gave a donation to the Ziff Torah Repair Fund.

Glenda and Paul Nagrodzki gave a donation to the Chaja Nagrodzki Simcha Fund in honor of her Yahrzeit.

## Chesed Committee

The Chesed Committee is looking forward to celebrating the New Year 5773 with our many Senior friends in the community.

On October 19, 2012 Cantor Daniel Gale will lead a lively Shabbat/Holiday Service in the Gazebo Room at Brookdale Place at 2:00 P.M.

Joining him in a special musical program will be vocalist Kay Virago, Holly Gettinger on oboe, and Maria Bitran on guitar.

On October 21, 2012, Chesed volunteers will fan out to nine other residences and private homes to distribute Rosh Hashanah treats and visit awhile.

We are pleased to announce that Sisterhood will partner with Chesed to provide bundt cakes to those families in mourning.

A Sisterhood "Bake-In" day was held to prepare the delicious recipe made famous by Ilse Nathan. If you are interested in helping in the future, please let us know.

We thank all our Chesed volunteers who participate in many acts of loving kindness and invite all who wish to join in this fulfilling mitzvah to contact

Sandra Gilbert  
967-6755

Cindy May  
967-5512

Dorothy Ziff  
967-8746

P.S. Kindly remember the Chesed Fund when you are considering donations to Temple Beth-El.

## Men's Club

I want to thank Steve Altmann, Brandon Cohen, Todd Doobrow, Sidney Doobrow (Todd's father) and Allen Halpern for helping the Religious School in putting up dry eraser boards in each class room.

I want to thank these guys for making the Religious School kick-off a huge success by cooking the BBQ lunch, setting up, and cleaning up for the event:

Steve Altmann, Scott Bloomston, Ed and Naomi Fineberg, Eric Goldis, Allen Halpern, Larry Newman, Eyal Ron, Tim Thornton and Dan Weinrib. Thank you again for volunteering and helping the Religious School as it starts the new year.



Sincerely,

Jacob Halpern  
President Men's Club



## Sisterhood

### Welcome to our new Sisterhood Members!!!

In the past year, we are happy to have the following women join Temple Beth-El's Sisterhood:

Jennifer Doobrow  
Toby Gewant  
Honi Gottlieb

Maurine Halpern  
Shea Halpern  
Naomi Kipp

Ella Rosen  
Linda Schnier  
Sara Shapiro

Welcome to you all! Sisterhood Membership Dues, normally \$36, are only \$18 through April, 2013!

### Cocktail Reception for Sisterhood Members—October 21st



Our Sisterhood will host 3 members of the Executive Committee of the Southern Region and a member of the Executive Committee from Women's League of Conservative Judaism on that Sunday afternoon. The Steering Committee will meet with these four bright, interesting women from Nashville, Knoxville, Atlanta, and Tampa later that evening for a training session on Developing New Leadership. Watch for your mail invitation.

### Community Book Review—November 11th

Alyson Richman will be discussing her newest book, *The Lost Wife*, and signing your copy as we share a Continental Breakfast at Temple Beth-El beginning at 10:00 am. The books are available at Little Professor for \$15 less 20% if Sisterhood of Beth-El is mentioned. Read it and bring it to the Book Review! Everyone in the community is invited and the charge is \$10.

*The Lost Wife* is a story of a young married couple separated during World War II by the Nazi captors. Each thought the other had died, until their eyes meet many, many years later with an inescapable glance of recognition. The story is a great historical novel. Alyson Richman is also the author of *The Last Van Gogh*, *Swedish Tango*, and *The Mask Carver's Son*. She will sign any of her books for you.



### New Year's Greetings

*In addition to the listings in the High Holiday bulletin, the following families wish you a New Year filled with health and happiness.*

Louise & Jim Abroms & Family  
Caryn, Steven, Elliot, Carl, & Zach Corenblum  
Lisa & Alan Engel & Family  
Gayle & Sidney Green  
Sheryl & Jay Perlstein & Family  
Judy & Ed Rutsky  
Becki & Josh Rutsky, Isaac & Lilah Kate  
Marlene Shapiro  
Ina Mae and David Sher  
Sandy & Gene Siegal & Family



Rhonda, Eric, Stuart, Philip, & Nathan Siegel  
Robin & Steve Smith & Family  
Ellen & Jerry Sokol  
Sandy & Morton Stern  
Geri & Bob Stone  
Debbie and Franklin Tessler and Family  
Carol Tuck  
Karen, Dan, & Jack Weinrib  
Becca & Hal White, Samuel & Abigail

## Sisterhood

### Rosh Hashanah Apple Cake Sale

Once again, Sisterhood of Temple Beth-El was hard at work baking our apple cakes for Rosh Hashanah. We had an incredibly talented group of women who gave their time and expertise and made baking over one hundred cakes look easy.

I am extremely grateful to the following “mavens”:

Arlene Fisher	Joy Fleisher	Shirley Froehlich	Linda Kemeny
Eileen Levin	Susan Padove	Pam Ruttenberg	Chita Weintrob

For those of you who ordered our cakes, we thank you! Your support, which helps Sisterhood fund our many projects for Temple Beth-El, means so much.

We wish our congregation a sweet and fruitful year.

Hannah Helman

### Sukkot & Shemini Atzeret/Simchat Torah Flowers

We express our appreciation to Melissa and Melvin Zivitz, who are generously donating the flowers which will adorn our bimah and add to the beauty of our Sukkot services. The flowers are in loving memory of their parents, Bessie and Nathan Zivitz and Mavis and Herbert Doty.

We express our appreciation to Hannah and Colin Helman, who are generously donating the flowers which will adorn our bimah and add to the beauty of our Shemini Atzeret/Simchat Torah services. The flowers are honoring their loved ones.

### Sisterhood's Annual Chanukah Latke Lunch & Raffle—Dec. 9th



You and your extended family and friends are invited to our Chanukah Latke Lunch following a Religious School program on Sunday, December 9th at noon. This is a super way to begin Chanukah with every edible tradition, without standing over a hot stove frying and flipping potato latkes...the room is always full, so call or email the synagogue for your reservations at 933-2740 or [egregory@templebeth-el.net](mailto:egregory@templebeth-el.net).

Watch your mail for raffle tickets from Sisterhood. The tickets are \$2 each or 10 for \$18!

We have an incredible team led by Julie Bernstein collecting some of the best gifts we've ever had!

If you have something neat to donate (we'll give you a receipt!), please contact Julie at 967-9838.

The prize drawing is at the Sisterhood Chanukah Latke Lunch on December 9th. You do not have to be present to win!

Be sure to send your check (Sisterhood, P.O. Box 550220, Birmingham, AL 35255) with your filled in Raffle stubs....please use address labels, so much easier!

The Sisterhood Judaica Gift Shop will be open that Sunday, so think of us for Chanukah and all gift-giving! (and watch for a sale!)

Sisterhood's Annual Temple Beth-El Directory for 2013 will be distributed that day.

With activities from the Men's Club and the Religious School on Sunday December 9th, the entire Synagogue will be alive with laughter, fun, and many families being together...it's one of the best days of the entire year at Temple Beth-El, full of Ruach!



## Sisterhood

### Sisterhood Shabbat—January 19th, 2013

Every year, Sisterhood of Temple Beth-El celebrates a January Shabbat by totally conducting the Service. On Friday night, January 18th, we will offer a delicious traditional Shabbat dinner after services. On Saturday, January 19th, Sisterhood members will conduct the full service and treat the congregation to a delicious Shabbat Luncheon. Any Sisterhood member is eligible to participate (we do have rehearsal if you need!), just contact Janet Reagan 956-9946 or JReagan@bham.rr.com. You may do any part of the Service you would like to.

### Sisterhood Prepares Shalach Manot Packages for You & Your Family & Friends



Beginning February 7th, Judy Cullinan and a large group of volunteers will begin packaging our 2013 Shalach Manot baskets. They will be working on 5 other dates to package, ship, and deliver baskets. When we print the dates, we hope that you will come with your family or Mahj Group to give us a hand...can't let a holiday go by without something from the Sisterhood in your house and available for you to send to family and friends! Along with the Gift Shop and baked goods, this fulfills our commitment to providing Judaica for your homes.

### Casino Night—February 9th, 2013

BY POPULAR DEMAND, we bring back our most fun fundraiser from about 8 years ago! A full Casino Night with all the usual tables, including Poker Tables. Mahj tables will be set up by reservation only. Of course there will be delicious food and great music playing....and every dollar profit will be given directly to the synagogue for programming and the Religious School. Bridget Sikora returns to repeat her chairmanship, and she puts on a great party! Our synagogue men will run the tables .... And everyone of you will have a great evening....**BE SURE TO PUT THE DATE ON YOUR CALENDAR NOW!** Re-schedule that ski trip or cruise, 'cause you won't want to miss this night!



### 2013 Sisterhood/Synagogue Directory

The most popular gift we give the Synagogue is your Annual Membership Directory....at no cost to members! Be prepared to pick yours and your neighbors' books up at TBE on December 9th from 9:00am-12:30pm. We will mail any directories not picked up at TBE for a fee of \$3.00 – mailing will be the week of January 21, 2013; there will only be one mailing.

We sell business and professional advertising and personals to help cover the costs of the directory. If you'd like to purchase a new ad or renew one and haven't heard from your solicitor, please contact Joy Fleisher at fleisher2707@bellsouth.net **NO LATER THAN OCTOBER 5th.**

Prices, paid to Sisterhood: ¼ page is \$55, ½ page is \$85; full page is \$140. For prices on the back cover and inside each cover, please contact Joy. These are prime spots, and are first come, first serve!

## Sisterhood

### Gift Shop News



The Sisterhood Gift Shop is currently having a sale on children's gifts and Rosh Hashanah related items. We are now in the process of ordering more items for Bar/Bat Mitzvahs and weddings, as well as Judaica in general.

We are asking that all Bar/Bat Mitzvah kids come by the gift shop and pick out gifts for their registry. We will be setting up shelves for those kids who register. We are also starting a bridal and baby registry.

Please visit our Gift Shop and bring your suggestions for items you would like to see while you're shopping.

Esther Levy and Fawn Bloomston  
Sisterhood Judaica Gift Shop Buyers

### Donations to Sisterhood

A Chai donation in loving memory of **Alberto Israel**

*From: Shirley and Jack Hasson*

A Chai donation wishing speedy recovery to **Ruth Siegler**

A Chai donation in loving memory of **Claire Simon**

*From: Pam Ruttenberg & Arnold Shiland*

A Chai donation wishing speedy recovery to **Ruth Siegler**

A Chai donation in loving memory of **Claire Simon**

*From: Shirley & Ron Froehlich*

### Leagrams

**Rabbi Michelle Goldsmith:** Sympathy on the loss of your mother, Elaine Gilbert

**Ricki Kline:** Wishing you speedy recovery

**Arlene Fisher:** Mazal Tov on becoming President of Temple Beth-El

**Barb Rothman:** Mazal Tov on the birth of your Granddaughter, Lily Natalie

**Harry Asman:** Sending good wishes

**Joe Levy:** Sympathy on the loss of your sister, Claire

*From: Esther & Jerry Brown*

**Sylvia Gouse:** Get well wishes

*From: Faye & Norris Friedman*

**Ruth Siegler:** Get well wishes

*From: Ceil & Max Herzel*

**Rhoda Rubenstein & Toby Jaffe:** Mazal Tov on the birth of Charlotte Rose & Lila Quinn Warner

*From: Ed Krys*

**Rabbi Ira & Vicki Flax:** Mazal Tov on opening a new Business

*From: Shirley & Paul Schlaff*

**Gilbert Mouyal & Family:** Sympathy on the loss of your mother, Suzanne

**Bernice Perlman:** Sympathy on the loss of your husband, Ben

*From: Natalie & Albert Sikora*

**Sylvia Gouse:** Get well wishes

**Ruth Siegler:** Get well wishes

*From: Charlotte Weinstein*

**Gilbert Mouyal:** Sympathy on the loss of your mother Suzanne

*From: Phyllis Weinstein*

**Leslie Niren Frieden:** Sympathy on the loss of your father, Norman Niren

**Deborah Botnik:** Sympathy on the loss of your son, Lee Litvine

*From: Gloria Weintraub*

## Sisterhood

### Don't PassOver this Opportunity!



Does Passover elicit memories of torturous meal planning & endless complaining from your family about the ills of matzah? Or maybe you love the challenge of creating a gourmet Passover Seder? Or recreating your Bubbe's perfect chicken soup with matzah balls?

The Sisterhood of TBE needs your Passover recipes for our newest project...A Passover Cookbook: Pure & Simple. Recipes should include: recipe title, ingredients, directions, degree of difficulty, & number of servings. Feel free to share stories about your recipes, or novel seder ideas!

Email or snail mail your recipe to [tbepassovercooks@gmail.com](mailto:tbepassovercooks@gmail.com) or Toby Gewant, 626 Highland Court, B'ham, 35242. Recipes can also be submitted online at [www.templebeth-el.net](http://www.templebeth-el.net).

## White Elephant Sale 2012



Thank you so very much to all of you who donated time & items to our White Elephant Sales. Over 3 sales, Cheryl Azrin and I grossed over \$5,000 for TBE. Over \$1,200 of that is going directly to TBE's Religious School. Thank you to my wonderful helpers: Kay Virago, Deborah Chargois, Holly Mazer, Lynette Mazer, Angela Becker, Wendy Rutkoff, Jan Jaffe, Lynda & Martin Schnier, AZA, TBE office staff, TBE maintenance staff, our families & many more.

In addition to raising money for TBE, we have ingratiated ourselves with the local community. We had many repeat customers & have helped people purchase lovely items at a price they can afford. Many worthwhile organizations have come to appreciate TBE, partly because unsold items were donated to them. These include CJFS & The Epic School. Unsold books were donated to the UAB Geriatric Psychiatry Unit & Emmet O'Neal Library, who use them in fundraisers or puts them on their shelves. Extra goods & clothing were donated to the UAB Tuberosus Sclerosis Research Sale being held in October. Extra kitchenware was donated to the Girl Scout camp in Chelsea. Our better items are being saved for our next sale which will be in conjunction with the barbecue in May. If anyone is interested, I still have some nice furniture, artwork, Judaica, & antiques/collectibles & can show them to you privately.

Please start saving items for our next sale. We will start collecting in early 2013 & welcome anyone who would like to volunteer their time. Thanks again to all of you.

Judy Cullinan

## Family Shabbat Ruach—A Family Friendly Shabbat Experience



Join us October 26th for TBE's *Family Shabbat Ruach*. Our casual service begins at 5:45pm.

*Family Shabbat Ruach* is an hour-long Friday evening service for both children and adults guaranteed to uplift your *ruach* (spirit) and enliven your soul.

Each service begins with our children welcoming the Shabbat in song, after which they will follow Rabbi Goldsmith to the Chapel for a children's service and activities.

Cantor Gale continues the service with the TBE Shabbat Ruach Band of Bruce Downs on guitar, Spencer Leffel on drums, and Gerald Rosenbaum on violin.

Bring your entire family as we joyously welcome the Sabbath in song and prayer.

Dinner to follow services. Cost is \$10 per person/\$25 per family.

To reserve your spot, please email or call the TBE office at [egregory@templebeth-el.net](mailto:egregory@templebeth-el.net) or 933-2740.

## Welcome New Members

Naomi & Patrick Davis  
Nathan, Jacob, Hunter, & Lily

Kristen & Jeff Hirsh  
Julia

Dovrat & Jeremy Duvdevani  
Omer, Lia, & Ori

Goldie & Ralph Waxman

Kerry & Dan Gorelick  
Hannah & Simon

Stu Brenner & Linda Hirst

# Welcome!

## Directory Changes

Ann Cohen

Sylvia Gouse

Brooke & Justin Kaplan

Bea Pollets

Arnold Shiland

Marilyn Slater

Richard Smith

Rosalie Teninbaum

Roslyn Wientraub

## TBE Staffing Update



As the holidays approach, we have some new faces and new energy in our office! Please welcome Isa Dorsky and Emily Gregory, who have recently been hired at TBE.

Isa will serve as Communications Coordinator and Assistant to the Clergy. Isa has a degree from the University of Alabama focusing on Restaurant and Hospitality Management, as well as Computers and Applied Technology. Isa has most recently worked as Event Specialist with The Grodner Group.

Emily will serve in the role of Office Receptionist, Membership and Outreach Coordinator. Emily has a Bachelor's Degree from Birmingham-Southern College, and a Master's Degree in Literature from UAB. She has worked in the sales and service industry over the past 3 years.

Along with other staff and lay leaders, the TBE Team is working hard to serve your needs with care and efficiency.





## Speedy Recovery

Best wishes for a speedy recovery and continued good health to:  
Harvey Benjamin, Laura Gordon, Marty Green, Virginia Heiman, Murray Pizette

## Condolences

With sympathy, we wish the following families peace and love during their time of sorrow:

*Sara Kallman Grabove*

*Claire Simon*  
Sister of Joe Levy

*Marshall A. Gordon*  
Husband of Penny Gordon; Father of Debra Gordon-Hellman and  
Bhimi Cayce (aka Linda Gordon); Brother of Bernard Gordon

*May the families be comforted among the other mourners of Zion and Jerusalem.*

## V'hatzlecha—A Hadassah Celebration at Temple Beth-El



Please attend Shabbat Sukkot services on October 6<sup>th</sup> when our local contingent for the Hadassah Centennial Celebration will be honored prior to their departure for Israel. Birmingham chapter co-presidents Sherrie Grunfeld and Lora Schwartz will deliver remarks on Hadassah's partnership with Israel and our world renowned Hadassah Medical Organization.

In Jerusalem, the delegation will participate in the dedication of Hadassah's gift to the people of Israel, the new Sarah Wetsman Davidson Hospital Tower. Join in wishing our delegates v'hatzlecha – safe travels in representing our many committed Birmingham Hadassah volunteers and generous donors.

## Got Perfect \$en\$e? She Does...Do You?

### Grocery Store Gift Cards Available!

Make your grocery shopping easy and help TBE at the same time!  
Purchase grocery store gift cards from TBE (\$ for \$) and the Temple makes money from your purchase.

Order your Perfect \$en\$e grocery store gift cards  
(Piggly Wiggly, Publix, Western, & Winn-Dixie)  
by calling the office at 933-2740

or order online at <https://www.templebeth-el.net/perfectsense/>

**We now offer Winn-Dixie!**



*Guess who I am!*

*Last month's picture was...  
Julian Brook*

## Special Birthdays

Mazal Tov to the following on their Special Birthdays for the month of October 2012:

**Louise Abroms, Nadine Cohen, Sidney Conn, Sherlee Ginsberg,  
Eddie Griffith, Rusty Radwin, Donna Schiff, Dorothy Shiland, Bobbie Sokol**



\*Special Birthdays are published in the bulletin beginning with age 50 and every 5 years thereafter.

## TBE Anniversaries

**October 2012**



Simmy & Phillip Barrocas (18)	Riva & Aisic Hirsch (62)
Nikki & Stephen Crawford (36)	Leslie & Jeff Parris (2)
Sallie & Bruce Downs (13)	Marian & Myron Radwin (57)
Karen & Michael Duvdevani (13)	Arlene & Jeffrey Redisch (33)
Lisa & Alan Engel (32)	Jessica & Evan Rhodes (4)
Robyn & Andy Feingold (13)	Kim & Lee Winston (19)
Cecile & Max Herzel (57)	

**May you go from strength to strength.**

*If your anniversary or special birthday is not listed above,  
please let us know so that we may update our records.*

**Please contact Emily at 933.2740 or [egregory@templebeth-el.net](mailto:egregory@templebeth-el.net)**

## Mazal Tov

**Larry Brook** for being accepted to the 2012-2013 class of Leadership Birmingham!

**Mary & David Kimerling** on the marriage of their son, Alex to Whitney Henry. Grandfather is **Joe Kimerling**.

**Brooke & Justin Kaplan** on the birth of their son, Samuel Lee Kaplan. Grandparents are **Beth & Jack Schaeffer**.

**Lisa & Alan Engel** on the birth of their grandson, Oliver Joel Haines. Parents are Andrea & Kent Haines; great-grandfather is **Sigmund Rosen**.

**Marsha & Harry Asman** on the birth of their great-grandson, Riley Aiden Herman. Parents are Erin & Chris Herman; grandparents are Malori & Barry Asman.

*Please join us the 4th Saturday of every month for **Simcha Shabbat** as we recognize everyone who has a simcha in the current month...  
birthday, anniversary, baby, B'nai Mitzvah, etc.*

## Temple Beth-El College Connection!



We would like to keep our Temple Beth-El college students connected to our shul. Four times a year we will send your child a gift reminding them of the upcoming holiday and that the folks at Temple Beth-El are thinking of them.

Please email your college student's mailing address & email address to [Susan.lapidus@gmail.com](mailto:Susan.lapidus@gmail.com)

## Donations

### Good Fortune Fund

A Chai donation honoring the special birthday of **Julian Brook**

*From: Lori & Stephen Dorsky*

A Chai donation honoring the special birthday of **Jenny Cohen**

*From: Sheri & Jay Epstein*

A Chai donation honoring **Sam Zuckerman & Cliff Wright**, wonderful TBE members

*From: Lynette & JB Mazer*

A Chai donation honoring **Michelle & Seth Bearman-Wolnek** on the Bar Mitzvah of their son, Meyer Wolnek

*From: Lori, Stephen, & Isa Dorsky*

Mazal Tov to **Chita & Howard Weintrob** on the birth of their grandson, Ryder Isaiah Hall

*From: Rhoda & Robert Fierman  
Charlotte Corenblum  
Marian & Myron Radwin*

Mazal Tov to **Fred Kanter** on the his induction into the Alabama Seniors Hall of Fame

*From: Freida & Eph Mazer*

Mazal Tov to **Howard and Suzanne Bearman** on the Bar Mitzvah of their grandson, Meyer Wolnek

*From: Hazel & Murray Pizette*

Mazal Tov to **Faye & Sidney Bernstein** on their 60th anniversary

*From: Joan & Don Weisberg*

Mazal Tov to **Dolly & David Staff** on their anniversary

*From: Debbie & Phil Gross*

Mazal Tov to **Steve Altmann** for being included in the 2012 Alabama Super Lawyers List

In appreciation of **Melissa & Steve Altmann**

*From: Michelle, Kevin, & Jack Pake*

Mazal Tov to **Michelle & Seth Bearman-Wolnek** on the Bar Mitzvah of their son, Meyer Wolnek

*From: Marian & Myron Radwin*

Mazal Tov to **Phyllis Weinstein** on being honored by the Birmingham Holocaust Education Center

*From: Frieda & Eph Mazer*

### Temple Beth-El General Fund

*Wishing a speedy recovery and continued good health to:*

A Chai donation wishing speedy recovery to **Sylvia Gouse**

*From: Rhoda & Marvin Link*

A Chai donation wishing speedy recovery to **Virginia Heiman**

*From: Susan & Steve Greene*

Wishing a speedy recovery to **John Gaydon**

*From: The Hirsch & Perlstein Families*

Wishing a speedy recovery to **Harvey Benjamin**

*From: Marian & Myron Radwin*

Wishing a speedy recovery to **Virginia Heiman**

*From: Barbara & David Betten*

A Chai donation wishing a speedy recovery to **Adrienne Brook**

Wishing a speedy recovery to **Virginia Heiman**

*From: Tobie & Bernard Axel*

Wishing continued good health to **Morton Stern**

*From: Debbie & Phil Gross*

Wishing continued good health to **Ruth Siegler**

Wishing continued good health to **Sylvia Gouse**

*From: Grace Finkel*

Wishing a speedy recovery to **Murray Pizette**

*From: Marian & Myron Radwin  
Anne E. Cohn*

### Prayer Book Fund

A generous donation in loving memory of **Rose & Samuel Ginsburg**, beloved grandparents on their yahrzeit

*From: Leslye & Steve Lapidus*

A High Holiday Machzor has been donated in loving memory of **Ruth & Joseph Sikora**, beloved parents on their yahrzeit

*From: Natalie & Albert Sikora*

### Cantor's Discretionary Fund

In appreciation to **Cantor Gale** for officiating at the funeral of her son, Lee Litvine

*From: Deborah Botnik*

In appreciation to **Cantor Gale** for officiating at the funeral of their mother, Suzanne Mouyal

*From: Alain Mouyal*

A most generous donation to **Cantor Gale** for helping with Daniel's Bar Mitzvah

*From: Polina & Leonid Mazur*

Thank you to **Cantor Gale** for helping with Jack's Bar Mitzvah

*From: Jennifer & Rich Rosenthal*

### Rabbi's Discretionary Fund

Thank you to **Rabbi Goldsmith** for helping with Jack's Bar Mitzvah

*From: Jennifer & Rich Rosenthal*

In loving memory of **Kate Haberman**, beloved grandmother on her Yahrzeit

*From: Candace Caine*

### Rita Laufman Youth Fund

In loving memory of **Norman Niren**

*From: Ralph Sokol*

### Chesed Committee Fund

Thank you to **Cantor Gale & Dorothy Ziff** for your visit to Brookdale Place

*From: Henni Kraselsky*

### Eddie Wilensky Memorial Fund

Mazal Tov to **Chita & Howard Weintrob** on the birth of their grandson, Ryder Isaiah Hall

*From: Diane & Howard Slaughter*

In loving memory of **Sheldon Wilensky** on his Yahrzeit

In loving memory of **Jordan Kirschberg**

In loving memory of **Ben Perlman**

*From: Ilene & Allan Wilensky*

## Donations

### Chico Bomchel Memorial Social Action Fund

In loving memory of **Alberto Israel**  
From: *Karen & Dan Weinrib*

A Chai donation in loving memory of **William Bomchel**, beloved father and Zadie on his Yahrzeit  
From: *Chita & Howard Weintrob and Family*

A Chai donation wishing Mazal Tov to **Chita & Howard Weintraub** on the birth of their grandson, Ryder Isaiah Hall  
From: *Judy & Ed Rutsky*

### Men's Club Children's Fund

A Chai donation in loving memory of **Claire Simon**  
From: *Sandra Jaffe & Barry Dreyer*

### Robert Spielberger Memorial Fund

In loving memory of **Norman Niren**  
In loving memory of **Lee Litvine**  
In loving memory of **Claire Simon**  
In loving memory of **Frank Harris**, beloved father on his Yahrzeit  
In loving memory of **Mabel Bloomston Zamler**, beloved mother on her Yahrzeit  
From: *Lynn & Bert Bloomston*

In loving memory of **Jack Langer**, beloved husband on his Yahrzeit  
From: *Joan Langer*

In loving memory of **Bobby Spielberger**, beloved father and grandfather on his Yahrzeit  
In loving memory of **Frank Harris**, beloved father and grandfather, and great-grandfather on his Yahrzeit  
From: *Wendy Rutkoff and family*

### Memorial Fund In loving memory of

A Double Chai donation in loving memory of **Stuart Shevin**  
From: *Esther Labovitz*

A Double Chai donation in loving memory of **Norman Niren**  
From: *Howard Baer*

A Chai donation in loving memory of **Ellen Dorsky**  
From: *Toby & Walter Klein*

A Chai donation in loving memory of **Alberto Israel**  
From: *Arlene & Milton Goldstein*

A Chai donation in loving memory of **Sol Shapiro**  
From: *Mary & Jay Cohen*

A Chai donation in loving memory of **Norman Niren**  
From: *Dolly & David Staff*

A Chai donation in loving memory of **Claire Simon**  
From: *Marian & Myron Radwin*

A Chai donation in loving memory of **Lee Schaeffer**  
From: *Tracy & Al Cohn*

A Chai donation in loving memory of **Lee Schaeffer**  
From: *Freddi Aronov*

**Norman Niren**  
From: *Buddy Cohen*  
*Susan & Steve Greene*  
*Arlene & Milton Goldstein*

**Ben Perlman**  
From: *Sherry & Jerry Cherner*

**Claire Simon**  
From: *Sherry & Jerry Cherner*  
*Ilse Nathan*

**Lee Schaeffer**  
**Stuart Shevin**  
From: *Arlene Fisher*

**Ellen Dorsky**  
From: *Freddi Aronov*

### On Their Yahrzeits In loving memory of

A most generous donation in loving memory of **Jack Tolbert**, beloved father on his yahrzeit  
From: *Jim Tolbert*

A very generous donation in loving memory of **Leon Myers**, beloved father on his yahrzeit  
From: *Esta Myers Kamplain*

A Double Chai donation in loving memory of **Harold Hirsch**, beloved husband on his yahrzeit  
From: *Felice Hirsch*

A Double Chai donation in loving memory of **Albert Hodes**, beloved father and grandfather on his yahrzeit  
From: *Rhonda, Eric, Stuart, Philip, & Nathan Siegel*

A Double Chai donation in loving memory of **Rosalyn Saron**, mother on her yahrzeit  
From: *Peggy Clarke*

A Double Chai donation in loving memory of **Sid Studin**, beloved father on his yahrzeit  
From: *Rob Studin*

A Double Chai donation in loving memory of **Julius Schuster**, beloved father on his yahrzeit  
From: *Abe Schuster*

A Chai donation in loving memory of **Paul Bruck**, beloved father-in-law on his yahrzeit  
From: *Ellen Bruck*

A Chai donation in loving memory of **Gilbert Odrezin**, beloved father on his yahrzeit  
From: *Greg Odrezin*

A Chai donation in loving memory of **Rabbi Cynthia Culpeper**, beloved daughter on her yahrzeit  
From: *Mary Culpeper*

A Chai donation in loving memory of **Mildred Stern**, beloved mother on her yahrzeit  
From: *Debbie & Dick Gann*

A Chai donation in loving memory of **Felicia Albertry**, beloved mother on her yahrzeit  
From: *Maureen Starr*

A Chai donation in loving memory of **Phillip Baer**, beloved husband on his yahrzeit  
From: *Elizabeth Baer*

A Chai donation in loving memory of **Victor**, beloved father on his yahrzeit  
From: *Basya Bolshinskiy*

A Chai donation in loving memory of **Annabelle Wilk**, beloved mother on her yahrzeit  
From: *Arlene Fisher*

A Chai donation in loving memory of **John Speaks, Jr.**, beloved son-in-law on his yahrzeit  
From: *Anne E. Cohn*



## Donations

A Chai donation in loving memory of **Lyudmila Shilkrot**, beloved daughter on her yahrzeit  
*From: Roza Golger*

A Chai donation in loving memory of **Mildred Stern**, beloved mother on her yahrzeit  
*From: Phyllis Stern Gross*

A Chai donation in loving memory of **Lawrence Olshan**, beloved father on his yahrzeit  
*From: Melvin Olshan*

A Chai donation in loving memory of **Binyamin Benish Salant**, beloved father on his yahrzeit  
*From: Nate Salant*

A Chai donation in loving memory of **Sofia Burtman**, beloved mother & grandmother on her yahrzeit  
*From: Dina Zinger & Family*

A Chai donation in loving memory of **Gerry Torme Siegel**, beloved sister on her yahrzeit  
*From: Torme Families*

A Chai donation in loving memory of **Sara Slaughter**, beloved mother on her yahrzeit  
*From: Harlene & O.J. Wehby*

A Chai donation in loving memory of **Lyudmila Shilkrot**, beloved sister on her yahrzeit  
*From: Marina Mazur*

**Ray Friedman**, mother  
*From: Sheila & Richard Friedman*

**Gerald Raymond**, husband  
*From: Irene Raymond*

**Francie Fried**, aunt  
*From: Karen & Reuben Halpern & Family*

**Fred Reed**, uncle  
*From: Foster Levy*

**Sophie Shweky**, grandmother  
**Jeff Cohen**, son-in-law  
*From: Natalie & Albert Sikora*

**Khayka Zeltser**, mother  
*From: Anya Treyger*

**David Davidson**, grandfather  
*From: Arnold Cooper*

**Randy Swinney**, son-in-law  
*From: Rhoda & Robert Fierman*

**Isaac Grusin**, father  
**Ben Grusin**, grandfather  
*From: Harriett Shulmister*

**Josif Golubov**, father  
*From: Zinaida & Lazar Golubov*

**Mark Schuster**, brother  
*From: Riva & Aisic Hirsch*

**Estelle Zivitz**, mother  
*From: Howard Slaughter*

*\*Donations received after September 5th will be included in the November bulletin.*

## Torah Fund 2013

**Uri Uri—Awake: Greet the new dawn!**



**Hannah Helman and Arlene Fisher, Torah Fund Co-Chairs announce...** that we have raised over **\$13,000** so far this year! We would be delighted to deliver a packet of donation cards and the beautiful pin to you ASAP. Monies that we raise go directly to The Jewish Theological Seminary to support scholarships for our future Rabbis, Cantors, Education Directors, etc. The levels of giving are: Benefactor—\$180; Guardian—\$300; Associate Patron—\$600; Patron—\$1200. Payments can be made in installments over the next 10 months; all credit cards are welcome as well as checks (or cash)!

**SPECIAL THANKS:** Melissa Zivitz, who has been a generous and continued supporter of Torah Fund at the Associate Patron level, has graciously made her two daughters-in-law, Rachel Zivitz and Amber Lewis, Torah Fund Benefactors - l'dor v'dor!

Since the last bulletin, the following women have joined us in our efforts to have the most successful campaign ever:

### ASSOCIATE PATRON

Brenda Friedman

Melissa Zivitz

### GUARDIAN

Shirley Froehlich

### BENEFACTOR

Betty Anfanger

Julie Bernstein

Vicki Denaburg

Mary Kimerling

Harriet Routman

Phyllis Weinstein

Sylvia Berman

Lisa Ruttenberg Bor

Rabbi Michelle Goldsmith

Pat Miller

Debbie Tessler

Rachel Zivitz

Ellen Bernstein

Ellen Bruck

Amber Lewis

Kim Mirelman

Razelle Toronto

*And your name...*

## Yahrzeits

### *Shabbat Hamoed* *October 5-6*

Gertrude Adcox  
 \*Benjamin Alper  
 Anna Altheim  
 \*Benjamin Berman  
 Solomon Bernstein  
 Ella Bloomston  
 Jack Broda  
 Leadine Brodie  
 Joel Brown  
 Shana Cohen  
 Fannie Cooper  
 Pearl Cooper  
 Gloria Dim  
 Mollie Eskin  
 \*Nathan Evensky  
 Aaron Feldser  
 Mary Fields  
 Ida Filler  
 Nathan Friedlander  
 Samuel Gorlin  
 Terry Green  
 \*Sadie Herman  
 \*Dorothy Hoffman  
 Gertrude Kahn  
 Hyman Kimerling  
 Louis Klein  
 \*Bennie Koplon  
 Stanley Lapidus  
 Benjamin Laskin  
 \*Morris Leader  
 \*Lizzie Levy  
 Leslie Lilienthal  
 Gabriel Jacob Marks  
 Anotoly Meshkov  
 Rose Monheit  
 Louis Overbach  
 \*Marguerite Permutt  
 Max Perrin  
 \*Hattie Randman  
 Samuel Ripps  
 \*Sadie Rosen  
 Morris Rousso  
 \*Freda Rubenstein  
 Helen Salzberg  
 Alex Schulman  
 Sol Schulman  
 Isaac Schwab  
 Rachel Schwab  
 \*Faye Shafferman  
 \*Toibe Shapiro  
 Albert Sidel  
 Martha Stein  
 Michael Stewart  
 David Weisman

\*Sally Zell  
 Hyman Zimmerman

### *Shabbat Bereshit* *October 12-13*

Edward Abelson  
 Jacqueline Bank  
 Emily Berger  
 \*Sam Berk  
 Perry Bernard  
 Harold Brande  
 William Charles  
 \*Max Cohen  
 \*Joseph Cooper  
 Muriel Degen  
 David Dubbs  
 \*Meyer Eisenberg  
 \*Joe Engel  
 \*Lena Epstein  
 Louise Fields  
 \*Hyman Ginsberg  
 \*Maurice Golson  
 T. Grabove  
 Marian Green  
 Esther Henry  
 Naomi Hodes  
 Nathan Husid  
 Sadie Isaacs  
 Louis Jacobs  
 Regina Jacobs  
 \*Sadie Kanter  
 David Kaplan  
 \*Hannah Kaufman  
 \*Michael Kimerling  
 \*Paula Kimerling  
 \*Mollie Letaw  
 Grigori Meixon  
 \*Fred Nichols  
 Freda Pincus  
 Amelia Rittenbaum  
 Louise Rosenberg  
 Joyce Routman  
 Sadie Saffer  
 Arthur Saron  
 Morris Senior  
 Carol Shepherd  
 \*Willie Shulmister  
 \*Joseph Solomon  
 Hyman Stein  
 Dorothy Stevens  
 \*Jennie Veo  
 Ivan Weintraub  
 \*Stephen Zimmerman

### *Shabbat Noach* *October 19-20*

Max Anfanger  
 Ethel Barrineau  
 \*Meyer Binstock  
 Alexander Chess  
 Bea Cohen  
 Helen Cohen  
 Mark De Los Santos  
 Miriam Elliott  
 Harry Elmets  
 Carol Fink  
 \*Jake Fleisher  
 \*Louis Friedman  
 Jack Gale  
 Tobi Gerson  
 \*Isaac Gingold  
 \*Jacob Glazer  
 \*Miriam Goldberg  
 Joseph Goldforb  
 \*Ben Goldstein  
 Fannie S. Goldstein  
 Margaret Goldstein  
 \*Rose Glazer Goldstein  
 Carol Greenberg  
 Gloria Jacobs  
 \*Brian Kimerling  
 Letty Klein  
 \*Lena Lipsitz  
 \*Sam Mazer  
 Faye Paskowitz  
 Tanya Peisahovich  
 \*Lena Radwin  
 \*Jacob Randman  
 \*Hilda Regal  
 Henry Rose  
 Sarah Sable  
 Antony Schwartz  
 \*Moses Shapiro  
 \*Ruth Sikora  
 \*Elijah Sirote  
 Sherlee Solomon  
 Yetta Stein  
 \*Ben Stivelman  
 \*Louis Temerson  
 Sura Weisberg

### *Shabbat Lech-Lecha* *October 26-27*

\*Eva Bernstein  
 \*Herbert Besser  
 Hattie Blatt  
 Jean Blitz  
 Ida Bryan  
 Rebecca Bunkin

Hyman Cohen  
 Irby Morton Cohen  
 Joseph Dim  
 Herman Dubin  
 Rhoda Dubin  
 Oscar Eskin  
 Marion Fast  
 \*Benjamin Feldser  
 \*Dorothy Fleisher  
 \*Abe Friedman  
 Emanuel Furman  
 \*Morton Goldberg  
 \*Elizabeth Goldman  
 \*B. J. Goldstein  
 \*Anne Greenberg  
 \*Rosebelle Greenberg  
 \*Samuel Hurvich  
 \*Rose Jaffe  
 Jack Kahn  
 Morris Kahn  
 Isaac Karpe  
 Ida Koshina  
 Samuel S. Lapidus  
 \*Julius Leader  
 \*Irvin Leslie  
 \*Jean Levy  
 \*Leonard Lewis  
 Harold Lubel  
 Jano Luck  
 Kathy Maisel  
 Morton Marks  
 \*Harris Marshak  
 Greta Melamed  
 Leopold (Poldi) Mendler  
 Akiva Ostrovsky  
 Jacob Packler  
 Faifish Pelikhov  
 Rose Pisetzky  
 Jennifer Rosenthal  
 Morris Rosenthal  
 \*Isadore Rotenstreich  
 Nina Ruben  
 Abel Ruttenberg  
 David Schneider  
 Esther Schwartz  
 Dave Siegel  
 David Silverstein  
 \*Jack Slaughter  
 Emily Starr  
 Johnny Toranto  
 \*Della Wallock  
 Lillian Wearb  
 Harold Weinstein

## Community Announcements

**LJCC Joy Club:** Join the Joy Club every Tuesday for a delicious kosher lunch and program at 12:15 pm. For more information, contact Mindy Cohen at 879.0411.

**Collat Jewish Family Services Caregivers Support Group:** Wednesday, October 17th. "Caring for the Caregiver". LJCC Senior Lounge from 6:00-7:30 pm.

**LJCC Mah Jongg Tournament:** Wednesday, October 17th, 10am-3pm, LJCC Auditorium. All levels of players welcome. Proceeds benefit the "Circle of Life" Knitting Society. \$30 includes lunch, snacks, donation and prizes; registration begins at 9:30am. Please contact Mindy Cohen 879-0411 or mcohen@bhamjcc.org for more information or to register. Please register by October 12th.

**Collat Jewish Family Services TLC Day 2012:** Sunday, November 4th. The annual TLC Day sponsored by Collat Jewish Family Services is coming soon...Teens needed to help senior adults...Just a few hours for ONE day...Want to perform a mitzvah? Help someone in need? Earn credit hours for school? Contact Debbie Bunch at debbie@cjfsbham.org or 879-3438.

**Visit Israel Next Summer with Rabbi Brian Glusman:** The Marcus Jewish Community Center of Atlanta and Congregation Beth Shalom are co-sponsoring a Multi-Generational Family Trip to Israel next summer. This wonderful tour is scheduled to leave Atlanta on June 11, 2013 and return on June 24. The trip is open to all members of the Temple Beth-El community. Rabbi Glusman and Rabbi Mark Zimmerman will serve as trip leaders. For additional information, please contact Rabbi Glusman, 678-812-4161 or send an email to brian.glusman@atlantajcc.org.

**3rd Annual Birmingham Jewish Film Festival:** SAVE THE DATE! January 12-13, 2013, sponsored by the LJCC

## Calling All Volunteers for Thanksgiving Day!

Come serve lunch to the less fortunate on Thanksgiving Day at Grace Episcopal Church in Woodlawn.

**2 shifts:**

**1st Shift:** 9:30am-11:30am (setting up and cooking)

**2nd Shift:** 11:30am-2:30pm (greeting, serving, and cleaning up)

**BE** involved

Call Eva Wilensky at 967-3340 or email [littleva@bellsouth.net](mailto:littleva@bellsouth.net) to let her know what shift you can volunteer for.

Thanks for sharing your smiling faces and helping hands for those less fortunate, showing them the warmth of our community.

TEMPLE BETH-EL  
2179 Highland Avenue  
P.O. Box 550220  
Birmingham, AL 35255-0220  
205/933-2740

Non-Profit Org.  
U.S. POSTAGE  
**PAID**  
Permit No. 889  
Birmingham, AL

ADDRESS SERVICE REQUESTED



**TBE Sukkot Events**

Wednesday, October 3rd 6:00pm  
TBE Community & Religious School  
Sukkot Dinner  
\$10 per person/\$25 per family

Friday, October 5th following Shabbat Services  
Sukkot Dinner & Java in the Hut  
*Sponsored by the TBE Foundation*

Monday, October 8th 6:30pm  
Erev Simchat Torah/Hakafot and Spaghetti Dinner  
\$8 per person/\$20 per family

RSVP for all events  
to Emily at [egregory@templebeth-el.net](mailto:egregory@templebeth-el.net) or 933-2740